

Break Free from Traditional Breast Imaging



NeoCoil 16-Channel Breast Coil (1.5T and 3T)

Innovations to Sharpen your Image

As a leader in breast imaging, your diagnosis can only be as good as the tools you have. At NeoCoil, we believe in maximizing the investment of your MR scanner with smart coils that deliver the image quality you need and patient experience they deserve.



NeoCoil

Innovations to **sharpen** your image

Easy on you. Easy on them.

Moving and positioning breast coils can be cumbersome as is positioning a patient in them. The 16ch Breast Coil was designed to address these challenges so you can focus on your patient while getting the best image possible.

- Lightweight design for easy lifting and positioning
- Modular design for greater positioning capability and improved patient comfort
- Table-top design for maximum flexibility
- Comfortable and adjustable head rest
- Greater reliability
- More cost effective
- Rated for patients to 250 Kg (550 lbs)

Better Images. Clearly.

NeoCoil centers every innovation on delivering exquisite clinical images. The 16ch Breast Coil is no exception.

- Improved SNR & uniformity
- Unique lateral design for improved axilla coverage
- Increased signal coverage in the sternum area

One Coil. Multiple Options.

Breast imaging for the patient is not only frustrating, but time consuming. The 16ch Breast Coil was designed with your needs in mind.

- Single device for both diagnostic and biopsy imaging
- Includes biopsy support components

Lighter. Faster. Better.

When it comes to coils, you don't want to compromise your image quality, your workflow, or your throughput. The 16ch Breast Coil addresses your most challenging issues – and delivers:

- Unilateral/bilateral imaging (8/16ch)
 - Up to 4x acceleration capability for 16ch
- Medial/Bilateral/Unilateral biopsy (6/8/12ch)
- Lightweight for easy lifting and storage
 - Only 5.6kg for diagnostic imaging
- Maximum allowable patient weight of 550 lbs.

16ch Breast Coil

The NeoCoil 16ch Breast Coil is a phased array coil for imaging structures of the breast, axilla and chest wall. It is a three part receive-only coil designed to provide high resolution imaging. The 16ch Breast Coil includes a coil support structure, patient support structure, biopsy components and comfort pads. The 16ch Breast Coil supports both diagnostic and biopsy imaging modalities while accommodating various anatomic shapes and sizes.

The 16ch Breast Coil consists of:

- Baseplate and Interface to the MRI Scanner
- Medial Array
- Left and Right Lateral Arrays
- Left and Right Biopsy Arrays
- Left and Right Biopsy Risers (1.5T only)
- Headrest Support Structure
- Chest Support
- Lateral and Medial Compression Plates
- Breast Blocker for Medial Access
- Patient Comfort Pads
- Biopsy Drapes
- Biopsy Grids



Features

Antenna Arrays:

Each antenna array is optimized to provide deep penetrating SNR and parallel imaging capabilities in axilla, breast and chest wall areas. The 16ch Breast Coil comes with two different hardware configurations:

- 16 channel for Diagnostic
- Up to 8 channel for Biopsy

Array Specifications:

Array	Channels
Medial Array	6 (3 Left, 3 Right)
Left and Right Lateral Arrays	10 (5 Left, 5 Right)
Left and Right Biopsy Arrays	2 (1 Left, 1 Right)



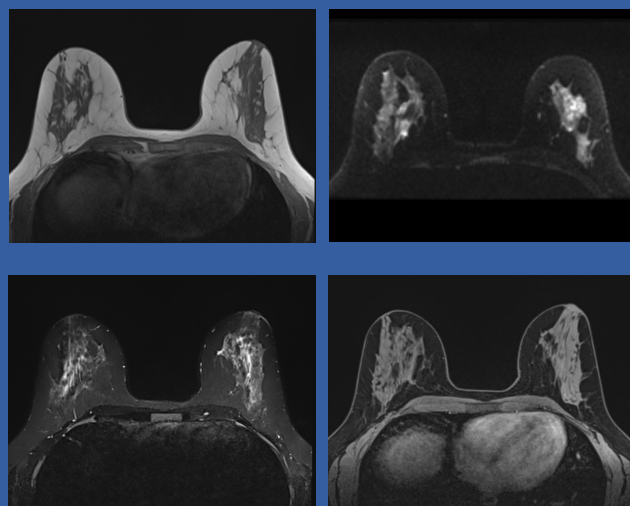
Breast Coil Systems:

System	Catalog Number
1.5T 16ch Breast Coil	NC149030
3T 16ch Breast Coil	NC149010
1.5T Left and Right Biopsy Risers	NC149023
1.5T Left and Right Biopsy Arrays (with lighting)	NC149031

Replacement Parts:

Item	1.5T Catalog Numbers	3T Catalog Numbers
Baseplate (includes system cable)	NC149223	NC149203
Medial Array	NC149220	NC149200
Lateral Array, Left	NC149221	NC149201
Lateral Array, Right	NC149222	NC149202
Biopsy Array, Left	NC149267	NC149207
Biopsy Array, Right	NC149268	NC149208
1.5T Biopsy Riser, Left	NC149290	N/A
1.5T Biopsy Riser, Right	NC149295	N/A
Pad Kit	NC088212	
Headrest	NC149033	
Biopsy Components: <ul style="list-style-type: none"> • Breast Blocker • Breast Blocker Pad • Medial Compression Plate • Lateral Compression Plate • 2 Wedge Pads 	NC149035	
Chest Support	NC088036	
Biopsy Drape Pack (Qty 5)	NC149475	
Biopsy Grid Pack (Qty 5)	NC149444	

MAGNETOM Sola 1.5T



Replacement parts are available through NeoCoil at Tel: 1.888.MRI.COIL (674-2645), Email: contactus@neocoil.com or the Web: www.neocoil.com

Coil Specifications

Component	Dimensions (L x W x H) (cm)	Weight (kg)
16ch Breast Coil (excluding pads and system cable)	62 x 50 x 23	5.6
Lateral Array (each)	25 x 9 x 23	0.8
Biopsy Array (each)	25 x 9 x 17	0.4
Medial Array	36 x 15 x 18	1.2
Biopsy Grid (each)	24 x 3 x 13	0.1

Siemens Scanner Compatibility

1.5T Scanner Platforms	3T Scanner Platforms
MAGNETOM Sola, NXVA20A or higher	MAGNETOM Vida, NXVA20A or higher
MAGNETOM Altea, NXVA20A or higher	MAGNETOM VidaFit, NXVA20A or higher
MAGNETOM SolaFit, NXVA20A or higher	MAGNETOM Lumina, NXVA20A or higher
MAGNETOM Aera, NXVA30A or higher	MAGNETOM Skyra, NXVA30A or higher
MAGNETOM Viato.Mobile, NXVA51A or higher	MAGNETOM Skyra fit, NXVA61A or higher
MAGNETOM Flow.Elite, NXVB10A or higher	MAGNETOM Skyra Fit, NXVA50A or higher
MAGNETOM Flow.Neo, NXVB10A or higher	
MAGNETOM Flow.Rise, NXVB10A or higher	
MAGNETOM Flow.Pure, NXVB10A or higher	

For more information, please call us at 1.888.MRI.COIL or visit our website at www.neocoil.com

NC00S041 Rev. 4
NeoCoil, LLC
N27 W23910A Paul Rd
Pewaukee, WI 53072 USA

www.neocoil.com
email: contactus@neocoil.com

