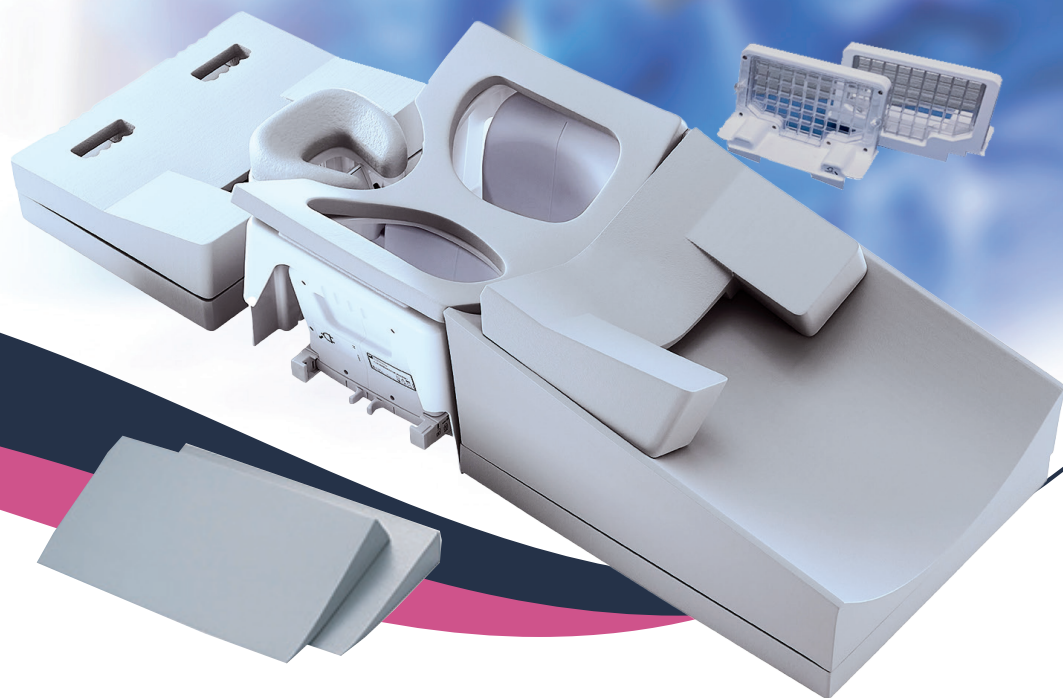


# Break Free from Traditional Breast Imaging



## NeoCoil 16-Channel Breast Coil (1.5T and 3.0T)

### Innovations to Sharpen your Image

As a leader in breast imaging, your diagnosis can only be as good as the tools you have. At NeoCoil, we believe in maximizing the investment of your MR scanner with smart coils that deliver the image quality you need and patient experience they deserve.



**NeoCoil**

Innovations to **sharpen** your image

## Easy on you. Easy on them.

Moving and positioning breast coils can be cumbersome as is positioning a patient in them. The 16ch Breast Coil was designed to address these challenges so you can focus on your patient while getting the best image possible.

- Lightweight design for easy lifting and positioning
- Modular design for greater positioning capability and improved patient comfort
- Table-top design for maximum flexibility
- Comfortable and adjustable headrest
- Greater reliability
- More cost effective

## Better Images. Clearly.

NeoCoil centers every innovation on delivering exquisite clinical images. The 16ch Breast Coil is no exception.

- Improved SNR & uniformity
- Unique lateral design for improved axilla coverage
- Increased signal coverage in the sternum area

## One Coil. Multiple Options.

Breast imaging for the patient is not only frustrating, but time consuming. The 16ch Breast Coil was designed with your needs in mind.

- Single device for both diagnostic and biopsy imaging
- Includes biopsy support components

## Lighter. Faster. Better.

When it comes to coils, you don't want to compromise your image quality, your workflow, or your throughput. The 16ch Breast Coil addresses your most challenging issues – and delivers:

- Unilateral/bilateral imaging (8/16ch)
  - Up to 4x acceleration capability for 16ch
- Medial/Bilateral/Unilateral biopsy (6/8/12ch)
- Lightweight for easy lifting and storage
  - Only 5.6kg for diagnostic imaging

## 16ch Breast Coil

The NeoCoil 16ch Breast Coil is a phased array coil for imaging structures of the breast, axilla and chest wall. It is a three part receive-only coil designed to provide high resolution imaging. The 16ch Breast Coil includes a coil support structure, patient support structure, biopsy components and comfort pads. The 16ch Breast Coil supports both diagnostic and biopsy imaging modalities while accommodating various anatomic shapes and sizes.

The 16ch Breast Coil consists of:

- Baseplate and Interface to the MRI Scanner
- Medial Array
- Left and Right Lateral Arrays
- Left and Right Biopsy Arrays
- Left and Right Biopsy Risers
- Headrest Support Structure
- Chest Support
- Lateral and Medial Compression Plates
- Breast Blocker for Medial Access
- Patient Comfort Pads
- Biopsy Drapes
- Biopsy Grids



## Features

### Antenna Arrays:

Each antenna array is optimized to provide deep penetrating SNR and parallel imaging capabilities in axilla, breast and chest wall areas. The 16ch Breast Coil comes with two different hardware configurations:

- 16 channel for Diagnostic
- Up to 8 channel for Biopsy

### Array Specifications:

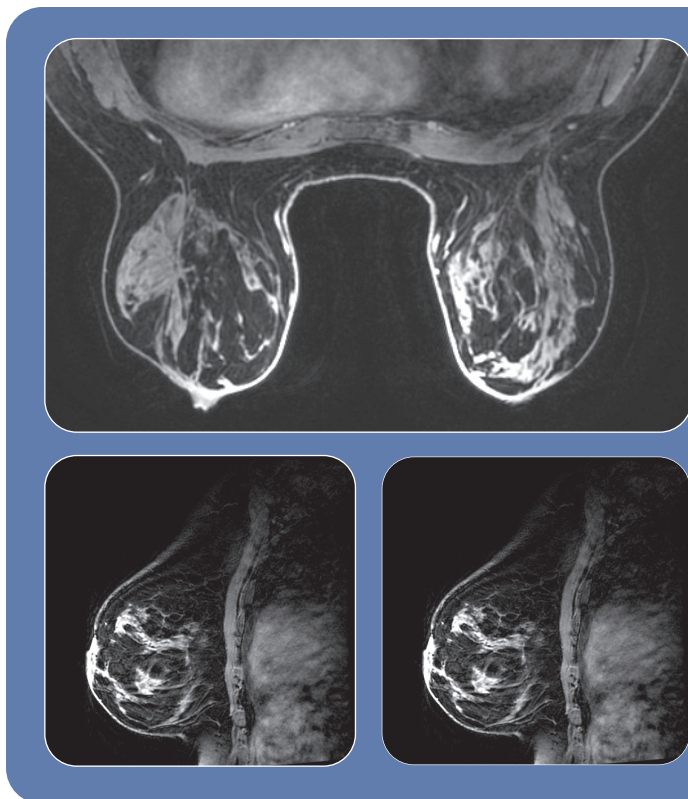
Array	Channels
Medial Array	6 (3 Left, 3 Right)
Left and Right Lateral Arrays	10 (5 Left, 5 Right)
Left and Right Biopsy Arrays	2 (1 Left, 1 Right)

### Breast Coil Systems:

System	GE Catalog Number
1.5T 16ch Breast Coil	M7006PH
3.0T 16ch Breast Coil	M7006PA

### Replacement Parts:

Item	1.5T Catalog Numbers	3.0T Catalog Numbers
Baseplate (includes system cable)	NC091003	NC088003
Medial Array	NC091000	NC088000
Lateral Array, Left	NC091001	NC088001
Lateral Array, Right	NC091002	NC088002
Biopsy Array, Left	NC091007	NC088007
Biopsy Array, Right	NC091008	NC088008
Biopsy Riser, Left	NC088090	
Biopsy Riser, Right	NC088095	
Pad Kit	NC088212	
Headrest	NC088033	
Biopsy Components: <ul style="list-style-type: none"><li>• Breast Blocker</li><li>• Breast Blocker Pad</li><li>• Medial Compression Plate</li><li>• Lateral Compression Plate</li><li>• Wedge Pads (Qty 2)</li></ul>	NC088035	
Chest Support	NC088037	
Biopsy Drape Pack (Qty 5)	NC088475	
Biopsy Grid Pack (Qty 5)	NC088444	
MCQA Phantom Holder (Qty 2)	NC088031	



## Coil Specifications

Component	Dimensions (L x W x H) (cm)	Weight (kg)
16ch Breast Coil (excluding pads and system cable)	62 x 50 x 23	5.6
Lateral Array (each)	25 x 9 x 23	0.8
Biopsy Array (each)	25 x 9 x 17	0.4
Medial Array	36 x 15 x 18	1.2
Biopsy Grid (each)	24 x 3 x 13	0.1

For more information, please call us at 1.888.MRI.COIL or visit our website at [www.neocoil.com](http://www.neocoil.com)



NC00S037 Rev. 4  
NeoCoil, LLC  
N27 W23910A Paul Rd  
Pewaukee, WI 53072 USA

[www.neocoil.com](http://www.neocoil.com)  
email: [contactus@neocoil.com](mailto:contactus@neocoil.com)

